



KHA's Current Report
April 5, 2024

President's Perspective – Help KHA Award Individuals Making a Difference

We know many individuals in Kansas are instrumental in making a difference for our hospitals and the health care they provide in our communities. Whether these individuals work in a hospital or outside our ranks, the Kansas Hospital Association wants to recognize their efforts. To honor those who have gone above and beyond the call of duty, we need your assistance in identifying who they are.

We encourage health care organizations to enter a nomination for the following awards:

[The Charles S. Billings Award](#) is the top honor given by KHA. The award recognizes a hospital leader for his or her lifetime of service and continuing contribution to the health care of Kansas. This award was established in 1971 to honor Billings' dedication and years of service to Kansans.

[CLICK HERE](#)
Nomination Form

[The Distinguished Health Care Advocate Award](#) honors individuals, organizations or groups that have provided an exemplary contribution to the health and well-being of the people of Kansas through their leadership in the political or policy arena. This awards members of KHA the opportunity to recognize those who work on our behalf from outside our ranks.

[CLICK HERE](#)
Nomination Form

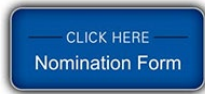
[The Donald A. Wilson Visionary Award](#) recognizes hospital-related individuals who have made an outstanding, innovative contribution to health care delivery, health care financing or initiatives that improve the health and clinical outcomes of their community. This award was established in 2007 to honor Wilson's dedication and years of service to Kansans.

[CLICK HERE](#)
Nomination Form

[The Trustee of the Year Award](#) honors a hospital board member who is a leader, gives back to the community and routinely goes beyond the call of duty. KHA members are encouraged to recognize a trustee who has served with distinction and made significant contributions to the betterment of their hospital and community.

[CLICK HERE](#)
Nomination Form

[The Heart of Health Care Award](#), previously called the Health Care Worker of the Year Award, recognizes and honors the excellence of health care workers statewide. KHA will recognize all nominated employees (one employee from every hospital) for making a significant contribution to the betterment of their hospital. New this year, we included a "Rising Star" category, which provides additional recognition to individuals who have been employed for less than five years.



[The Workforce Strategies Award](#) recognizes a team of employees, providers or volunteers who worked collaboratively to make a significant contribution to the well-being, retention or recruitment of health care workers at their facility(s) or in Kansas.



Thank you in advance for your assistance in helping us recognize and highlight those individuals deserving of our recognition. Learn more about KHA awards, and make your nominations online by June 1. We have a new online nomination tool with Reviewr, and we hope this new tool makes the nomination process even easier.

--Chad Austin

Attention CEOs – KHA Leadership Institute Nominations Now Open for Summer 2024

The Kansas Hospital Association is currently accepting nominations for the 2024 KHA Leadership Institute, which is scheduled for June, July, August and September. This popular KHA program recognizes hospital employees who display outstanding leadership abilities and provides them with additional leadership training to enhance their skills. The class is expected to fill quickly, so you are encouraged to return enrollment materials soon.

Participation is limited to 30 students to allow for networking and group interaction. Enrollment will be taken on a first-come, first-served basis. Initially, one student per hospital will be admitted. If space allows, additional students will be admitted. Nomination by the hospital CEO is a prerequisite (the nomination questionnaire is included in the brochure). Payment must be received to secure the applicant's enrollment.



--Jennifer Findley

Mark Your Calendar for the 2024 Convention: Champions of Change

The 2024 [Kansas Hospital Association Annual Convention](#) and [Trade Show](#) is Sept. 5-6 in Overland Park. We are thrilled to announce the convention theme *Champions of Change*.

A [tentative agenda](#) for the 2024 Convention and Trade Show is now available.

The Sheraton Overland Park will serve as convention headquarters, and the Kansas Hospital Association has blocked hotel rooms for those attending the convention at \$144 per night. Call (888) 236-2427 to make reservations or use the link below. A deposit for the first night's stay on all rooms is required and non-refundable for reservations canceled after Aug. 13. Please make all reservations under individual names and not a generic hospital name.



For questions about the convention, contact [Hayley Finch-Genschorck](#). For questions about the trade show, contact [Melissa Willey](#). Both can be reached by phone at (785) 233-7436.

--Hayley Finch-Genschorck

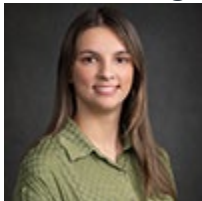
Pneumococcal Vaccine Update for Physicians and Clinicians – April 30

Please join us for a pneumococcal vaccine update webinar from noon to 1:00 p.m. on Tuesday, April 30. Subject experts Lynn Fisher, MD, family physician and Gretchen Homan, MD, pediatrician, will provide updates impacting adult pneumococcal vaccine recommendations for adult and pediatric patients, respectively. Monica Pando, RN, vaccines for children coordinator, will discuss navigating these updates from a clinical perspective.



--Hayley Finch-Genschorck

Summer Fangman Joins the KHA Team



The Kansas Hospital Association is pleased to announce Summer Fangman, administrative professional, has joined the KHA staff team. Summer is a recent graduate from Washburn University with a degree in Psychology. Before joining KHA, she worked as a shift supervisor for Glory Days Pizza. Prior to that, she worked at Ascension Living Via Christi Village as an activities assistant. Summer brings excellent customer service skills to this position. She enjoys entertaining her friends and family using locally grown foods when possible. We are excited to have Summer greeting our members on the phone and in person at KHA. Please help us in welcoming Summer to the KHA team!

--Chad Austin

Register Now for the Health Care Preceptor Academy – May 23

Register now and plan to attend the Health Care Preceptor Academy on May 23 in Hays. The academy is designed to engage and grow current and future preceptors with key education tools and strategies to foster a strong preceptor/orientee relationship. This interactive program provides information and practical tools to improve preceptor abilities.



--Hayley Finch-Genschorck

QHi April Back to Basics Training Session

Please join us from 1:00 p.m. to 2:00 p.m. on Thursday, April 11, for a review of the QHi reporting tool. After a brief program update, participants will walk through the basics of adding measures, adding users, entering/uploading data and running/scheduling reports.



[A recording](#) of the prior training session is available.

--Sally Othmer

Centering Black Mental Health: A Conversation on Mental Health and Parenting

The [Kansas Birth Equity Network](#) is hosting the third annual Black Maternal Health Week event, a conversation centering on mental health during pregnancy, birthing and parenting.

Join us at 10:30 a.m. on Saturday, April 13, for a robust conversation on mental health and the Black birthing and parenting experience. The event is free, lunch will be provided and attendees will have the opportunity to connect with Black-owned businesses and other community resources. Childcare is available.

Whether you're a parent, community member, birthworker, health care professional or simply interested in learning more, this event is for you! This event is a hybrid. Register to attend via Zoom webinar, and you will receive the link before the event.



If you have questions, contact [Oluoma Obi, MPH](#), program manager, Department of Population Health, University of Kansas Medical Center, at (913) 945-7892.

--Karen Braman

Funding to Assist with Housing Repairs

The U.S. Department of Agriculture Kansas Rural Development has two funding programs available to assist individuals with repairing health and safety hazards to their homes. The Section 504 Home repair program can also be used to cover the construction of storm shelters. Some other examples include roof, furnace, air conditioner or accessibility repairs. The Single Family Housing Repair Loans and Grants program provides loans to very low-income homeowners to repair, improve or modernize their homes or provides grants to elderly, low-income homeowners to remove health and safety hazards. More information can be found on the [USDA website](#).

--Jennifer Findley

Federal and National News

CMS Issues Final CY 2025 Medicare Advantage Capitation Rates and Part D Payment Policies

The Centers for Medicare & Medicaid Services [released](#) the final rule on Medicare Advantage capitation rates and Part D payment policy for the calendar year 2025. MA plans are estimated to receive an increase of more than \$16 billion, or 3.7 percent, in 2025 compared to 2024. CMS also finalized improvements to the structure of the Medicare Part D drug benefit, resulting in lower drug costs for Medicare beneficiaries.

CMS Issues Marketplace Benefit and Parameters Final Rule for CY 2025

The Centers for Medicare & Medicaid Services [released](#) the calendar year 2025 Marketplace notice of benefit and payment parameters final rule. The rule includes several policies that impact the Medicaid program, Children's Health Insurance Program and Basic Health Program. CMS finalized certain network adequacy updates, extended the special enrollment period and streamlined the enrollment process.

CMS Issues Additional Guidance on Informed Consent

The Centers for Medicare & Medicaid Services [issued](#) additional guidance to clarify expectations around hospital informed consent. According to QSO-24-10-Hospitals, patients under anesthesia should only receive examinations that are medically necessary and for which informed consent was provided. Revisions to [Appendix A](#) related to consent will be forthcoming.

CMS Extends Special Enrollment Period for Individuals Losing Medicaid Coverage

The Centers for Medicare & Medicaid Services [extended](#) the [Special Enrollment Period](#) for individuals who have lost Medicaid coverage during the Medicaid "unwinding." These individuals will have until Saturday, Nov. 30 to apply for coverage through the federal marketplace at the [Healthcare.gov website](#).

CMS Releases FFY 2025 Medicare Inpatient Rehabilitation Facility PPS Proposed Rule

The U.S. Departments of Health and Human Services, Labor, and the Treasury released a [final rule](#) regarding short-term, limited-duration insurance and independent, noncoordinated excepted benefits coverage. The final rule will affect STLDI sold or issued on or after Sunday, Sept. 1.

According to the agencies, "the Biden-Harris Administration is taking yet another [action](#) to lower health care costs and protect consumers from being scammed into purchasing lower quality insurance, or "junk insurance." The rule would [amend](#) the existing federal definition of STLDI to limit the length of the initial contract term to no more than three months and revise the maximum coverage period to no more than four months.

CMS Releases FFY 2025 Medicare Hospice, Psychiatric and Skilled Nursing Facility PPS Proposed Rule

The Centers for Medicare & Medicaid Services [released](#) the federal fiscal year 2025 Medicare [Hospice](#), Inpatient [Psychiatric](#) Facility and [Skilled Nursing Facility](#) prospective payment system proposed rules.

Facilities paid under the Medicare hospice payment program are estimated to receive an increase of \$705 million or 2.6 percent as compared to 2024.

The proposed skilled nursing facility PPS payment update is estimated to [increase](#) Medicare payment rates by \$196.5 million or 4.1 percent. This new rate includes a market-basket update of 2.8 percent, plus 1.7 percent market-basket forecast error adjustment, less 0.4 percent mandated productivity adjustment.

The proposed inpatient psychiatric facility PPS payments are estimated to [increase](#) by \$70 million or 2.6 percent.

Issue Brief Available on CMS FFY 2025 Medicare Inpatient Rehabilitation Facility PPS Proposed Rule

The Centers for Medicare & Medicaid Services [released](#) the federal fiscal year 2025 Medicare Inpatient Rehabilitation Facility prospective payment system [proposed rule](#). CMS proposed to increase the market basket by 3.2 percent. After reducing the market basket by the mandated productivity factor and accounting for increases to outlier thresholds, the resulting overall gain is estimated to be 2.5 percent. The rule includes proposed updates for the wage index, updates to the Inpatient Rehabilitation Facility Quality Reporting Program and requests for information about the future measure concepts for the IRF QRP and creating an IRF QRP Star Rating System.

CMS Publishes EMTALA Guidance

The Centers for Medicare & Medicaid Services published [guidance](#) on the Emergency Medical Treatment and Active Labor Act related to procedures around the release of the Quality Improvement Organization's 60-day report. This report is requested when CMS refers an EMTALA case to the U.S. Department of Health and Human Services Office of the Inspector General and for OIG's investigation of the case. Specifically, the guidance states the 60-day report may not be released to the affected physician and/or hospital until after the OIG investigation is completed and the OIG closes the case.

CMS Set to Publish Rules to Streamline Medicaid Enrollment

The Centers for Medicare & Medicaid Services [announced](#) that [rules](#) streamlining certain Medicaid enrollment standards were slated to be published on Tuesday, April 2. Among the changes that can be expected are the elimination of lockout for nonpayment of Children's Health Insurance Program premiums, increased time for Medicaid applicants to respond to documentation data requests and more flexible rules for accounting for spend-down expenses.

Alcohol-Related ED Visits Short Report Available

The Drug Abuse Warning Network released an updated [report](#) focused on emergency department visits for alcohol-related concerns. The report shows the staggering number of ED visits nationwide — 8,566,725 — and outlines the reasons behind these visits, which range from intoxication to injury to chronic liver disease. The data continue to show the importance of accessible and equitable care for patients with alcohol and other substance-related disorders.

MLN Connects Provider eNews Available

The Centers for Medicare & Medicaid Services issued the following [updates](#) to *MLN Connects Provider eNews*:

- [ESRD Claims: Manual Update to Revise Section Title & Correct Condition Codes](#)

Before You Go ...

The Health Resources and Services Administration opens funding opportunities and applications for loan repayment and scholarship programs.

- [National Health Service Corps Scholarship Program](#)
 - Deadline: Thursday, April 25
- [Nurse Corps Scholarship Program](#)
 - Deadline: Thursday, May 2
- [Opioid-Impacted Family Support Program](#)
 - Deadline: Monday, May 6
- [National Health Service Corps Loan Repayment Programs](#)
 - Deadline: Thursday, May 9